



User Guide

Hand Pallet Truck



Martello Hire & Logistics Limited
Unit 12 Riverside Industrial Estate
West Hythe Road
Hythe
Kent
CT21 4NB

Tel: 01303 901399

User Guide Hand Pallet Truck

WARNING

Do not use the truck before reading and understanding these operating instructions. Keep for future reference.

Foreword

Before operating this hand pallet truck, read this instruction handbook carefully and understand the usage of the hand pallet truck completely. Improper operation could create danger. This handbook describes the usage of the different hand pallet trucks. When operating and servicing the hand pallet truck, make sure, that it applies to your type.

Some described functions are optional and therefore not necessarily equipped with your truck.

Correct Application

This truck is a manually operated hand pallet truck deigned to lift and transport the rated load on industrial pallets. Do not lift or carry person and don't use this truck for other purposes other than its intended use. A wrong usage can cause harm, injuries or can damage equipment.

The operator has to ensure the correct usage and has to ensure that this truck is used only by staff, who are trained and authorised to use this truck.



The truck has to be used on substantially firm, smooth, level and prepared surfaces. Driving with the load on slopes is not allowed. The load must be placed approximately on the longitudinal centre plane of the table and must be in satisfactory condition.

The capacity is marked on the identification plate and depending on the version eventually additionally on the capacity sticker. The operator has to consider the warnings and safety instructions. The hand pallet truck is intended to be used for indoor applications with ambient temperatures between +5°C and + 40°C. Operating lighting must be a minimum 50 Lux.

Modification

No modifications or alterations to this hand pallet truck which may affect, for example, capacity, stability or safety requirements of the truck, shall be made without the prior written approval of the original truck manufacturer. This includes changes affecting, for example braking, steering, visibility and the addition of removable attachments. When the manufacturer approves a modification or alteration, they shall also make and approve appropriate changes to capacity plate, decals, tags and operation and maintenance handbooks. By not observing these instructions, the warranty becomes void.

Description of the Hand Pallet Truck

Main components, safety devices and warning labels

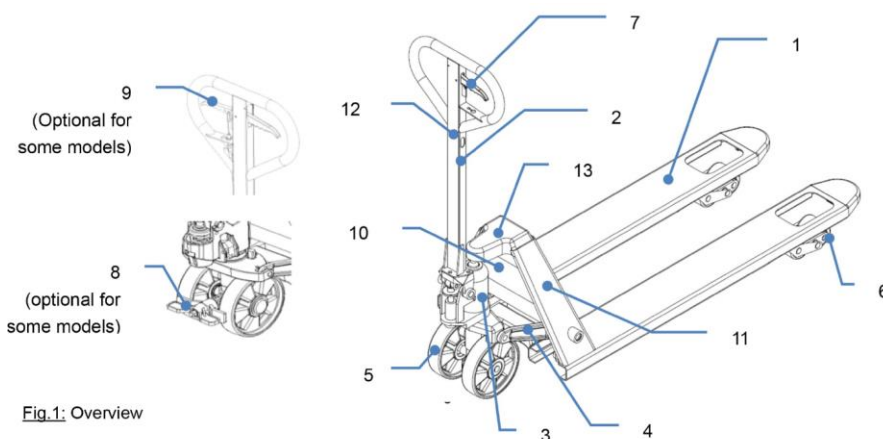
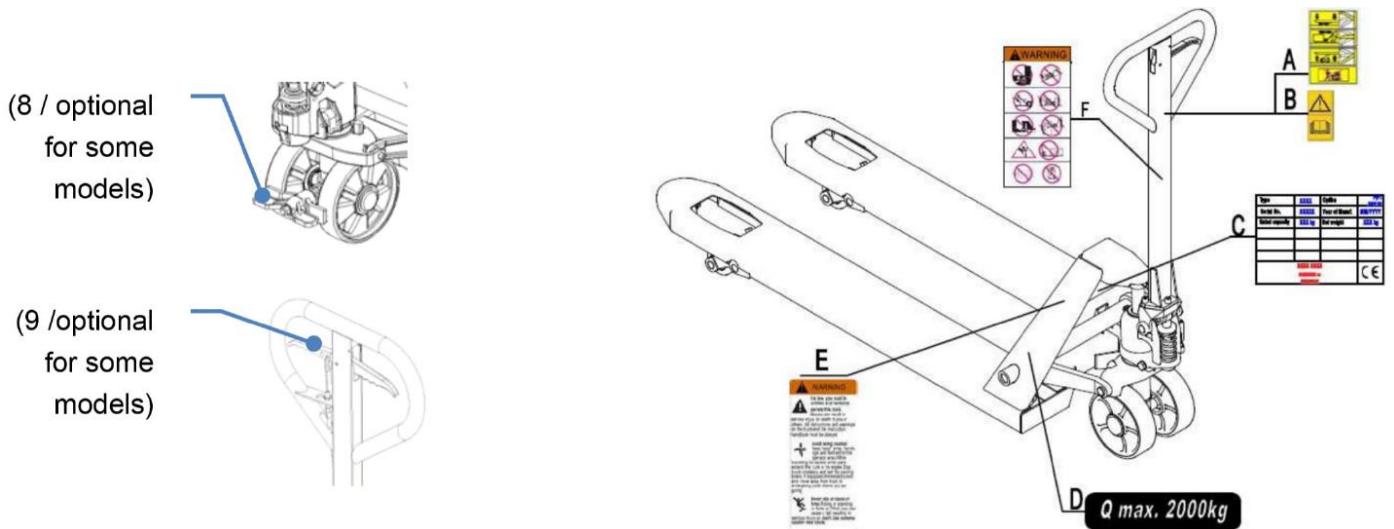


Fig.1: Overview

- | | |
|----------------------|--|
| 1. Chassis | 8. Parking-/Footbrake (Option) |
| 2. Tiller arm | 9. Progressive parking and drive brake, lever with drum brake (optional) |
| 3. Hydraulic pump | 10. Identification plate (ID-plate) |
| 4. Lifting mechanism | 11. Company logo and/or capacity sticker |

- 5. Steering (front) wheels
- 6. Load wheels (single/tandem)
- 7. Lever
- 12. Lifting function instruction sticker
- 12. Eventually capacity sticker

Description of the safety devices and warning labels



5

Warning and Safety Instructions



DO NOT

- Allow another person other than the operator to stand in front of or behind the truck when it is moving or lifting/lowering.
- Overload the truck.
- Put foot in front of rolling wheel, injury could result.
- Use the truck on a slope or inclined surface, the truck may become uncontrollable and create danger.
- Lift or carry people. People could fall down and suffer severe injury.
- Use truck with unstable, unbalanced loosely stacked load.
- Use the truck in explosive atmospheres.

Watch difference in floor levels when moving the truck. Load could fall down, or the truck could get uncontrollable.

Keep watching the condition of load. Stop operating table if load becomes unstable.

Practice maintenance work according to regular inspection.

This truck is not designed to be water resistant, therefore use it in dry atmospheres.

Transporting

For transporting, remove the load, lower the truck to the lowest position and lash it safe with dedicated lashing straps.

Daily Inspection

This chapter describes pre-shift checks before putting the truck into operation. Daily inspection is effective to find the malfunction or fault on the truck and can maximise the lifetime. Check the truck on the following points before operation.



Do not use the truck if any malfunction or fault is found.

- Visually check for structural deformation or cracks of arms, forks, or any other component, and unusual noise or binding of the lifting mechanism.

- Check if there is any oil leakage.
- Check the vertical creep of the lifting mechanism.
- Check the smooth movement of the wheels.
- Check if there are any particles or damages on the wheels.
- Check if all the bolts and nuts are tightened firmly.
- If equipped, check the brake.
- Verify that all labels are in place.

Operating Instructions

- When operating the truck, the operator has to wear safety shoes.
- The truck is intended to be used for indoor applications with ambient temperatures between +5°C and + 40°C.
- The operating lighting must be a minimum 50 Lux.
- Do not use the truck on angled surfaces.
- Never leave a loaded pallet truck unattended.

Parking

Lower the forks to the lowest position and park the Hand Pallet Truck on a smooth and even level ground where the truck does not disturb other operations. If equipped with a brake use the brake for parking the truck (see description below).

Lifting

Check that the load does not exceed the loading capacity of the pallet truck. Roll the pallet truck with its forks slowly under the pallet/load until the back end of the fork rests against the load. Shift the operating lever down to the lifting position. Lift the load by up-and down movements of the tiller arm.

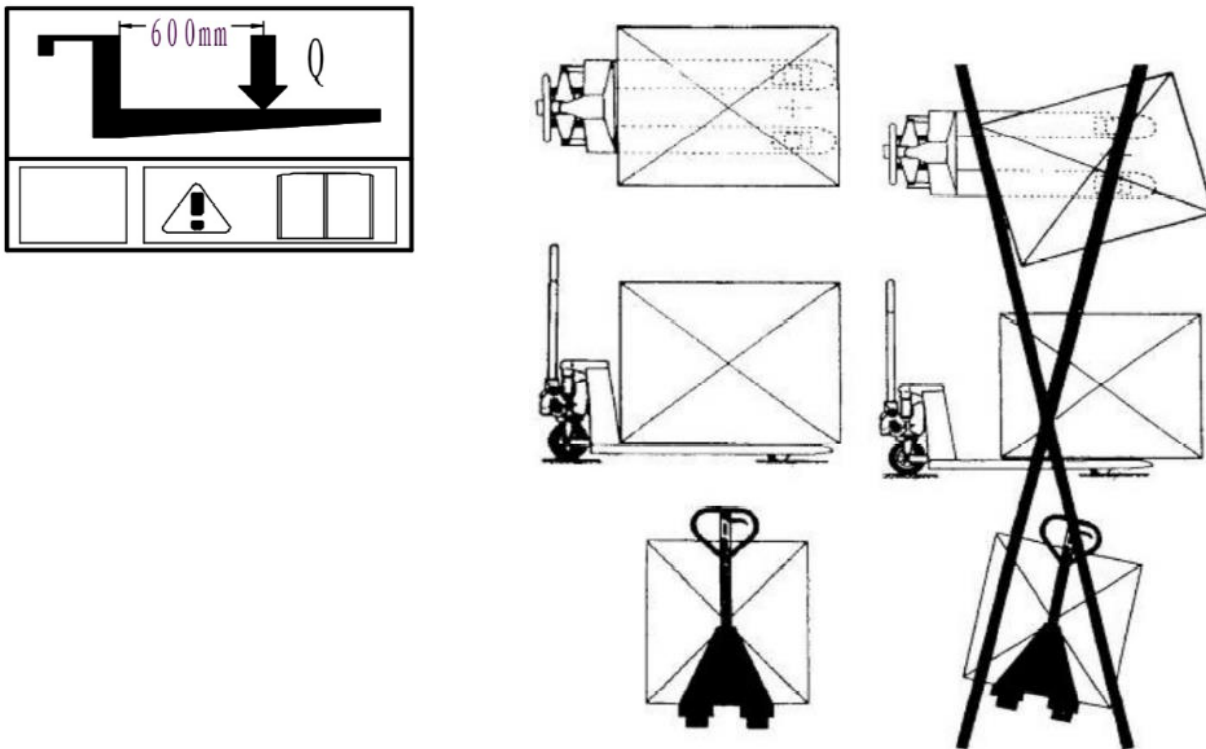


Fig.10: Load conditions

Lowering



Do not put foot or hand under the lifting mechanism.

Lower the load by shifting the operating lever up to the lowering position carefully. By releasing the lever, the lowering movement will stop. Ensure there is adequate clearance behind, then move the pallet truck away.

Moving

- Do not operate the truck on a slope or inclined surface.
- Watch difference of floor level when moving lifter. Load could fall down.
- Make the load stable to prevent it from falling down.
- The truck might be not equipped with a brake. In this case, the braking distance is longer and depends on the operator.

If equipped, release the brake.

Move the truck by pushing or pulling the tiller arm.

The tiller arm is connected to the steering rollers. The wheels are steered automatically by moving or steering the tiller arm.

Parking/Footbrake (optional for some models)

Follow these instructions if a parking/footbrake is equipped with the truck.

To apply the brake step on the “lock” side of the brake plate until its angle is 45°. To release the brake step on the “move” side of the brake plate until it is in horizontal position.

Progressive drive and parking brake (optional for some models)

Follow these instructions if a progressive drive-and parking brake is equipped with the truck. By pulling the lever of the progressive parking and foot brake, the truck will brake smoothly to the desired adjustment. To park the truck, after fully pulling the lever, the small latch on the braking lever must be moved to the right, then the operator can release the lever. By start operating, the truck, pull the lever and then swing the latch to the left side, then release the lever.

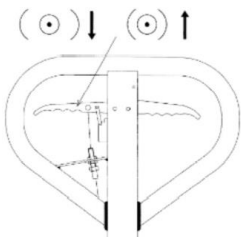


Fig. 11: Lever drive-and parking brake



Depending on the load conditions the braking behaviour is changing. Please do not overstress the brake, it could generate loss in braking capacity.

Quick Lift (optional for some models)

When the load is less than 120kg, the pallet truck has the quick-lifting function. It is about 5 times pumping to lift truck from the minimum height to maximum height. When the load is more than 120kg, the pumping function will automatically switch to a normal lifting speed.

Malfunctions

If there are any malfunctions or the truck is inoperative, please stop using it, place the truck in a safe place. Avoid further usage. Contact Martello Hire immediately.

For a fully copy of the User Manual please visit www.martellohire.co.uk